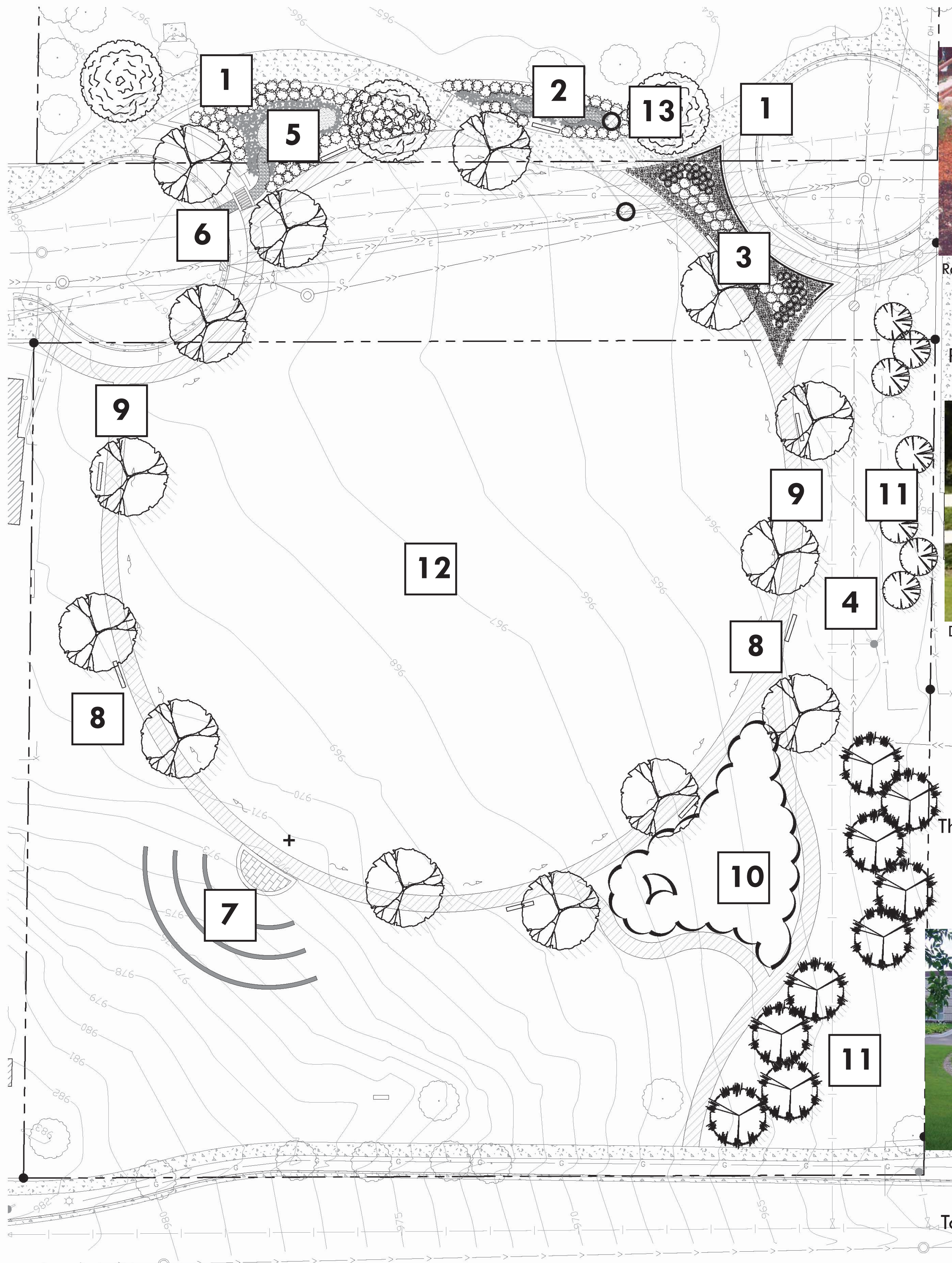


Way Park Phase 1: Grading and Trails

This initial phase of the Way Park masterplan is set to build the foundation for the future completed park. Trails that connect users throughout the park will be constructed as well as a few feature areas to provide a glimpse of what is to come in this beautiful setting. Our goal in this initial phase to make sure that all of the pieces constructed in Phase 1 create a functioning park landscape while providing future links to park programming elements.



Existing Trail/Emergency Access-Typ.

1

Raingarden Location #1

This raingarden location will capture all the runoff from the central commons area.

2



Raingarden Outfall-Typ.



Raingarden Outfall (hidden)-Typ.

Entrance Plantings

Park entrance plantings with seasonal color and decorative barrier fencing

3



Decorate Wood Fencing w/ Plantings



Decorative Steel Fencing

Original Master Plan Raingarden Location

This area was abandoned due to conflicts with existing utilities.

4

Raingarden Location #2

This raingarden location will use a curb cut from the existing cul-de-sac to charge the adjacent raingarden. The raingarden will reduce existing site run-off and improve downstream drainage

5



Raingarden with Rock Tunnel



Raingarden with Culvert Feature

Culvert Feature with Rock Wall

To connect the curb cut to the raingarden a rock tunnel and small culvert feature may be required. This feature will provide a unique attribute to the raingarden.

6



Retaining Wall Culvert Feature

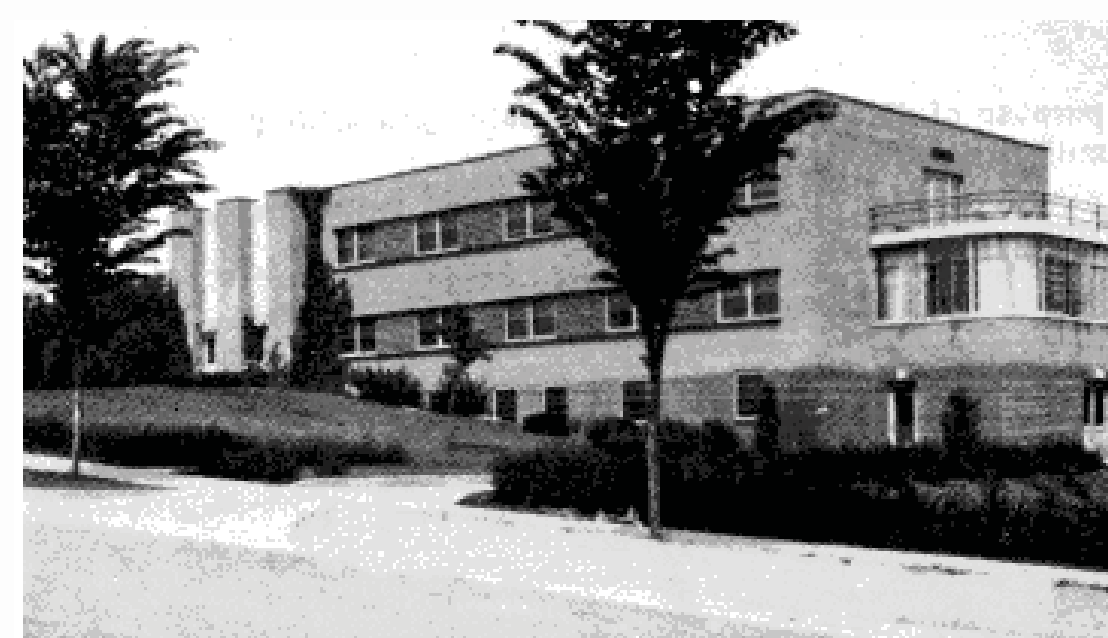


Stone Culvert Feature

Amphitheater Seating

Amphitheater stage and seating has been shown for up to 50 spectators. Elimination of the outward ring would reduce this to 25 spectators. Optional pricing will be provided for rock seatwalls that mimic the removed hospital facade.

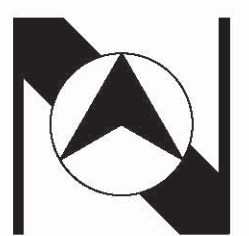
7



Original Northfield Hospital



Amphitheater with Rock Walls



8

Memorial Bench-Typ.

Concrete slabs will be provided for memorial bench locations.

9

Asphalt Path-Typ.

The asphalt path will be built to current City of Northfield standards.

10

Heritage Oaks Area

This area will be allocated to donations of oak species with donations plaques. Seating may be provided in this area.

11

Evergreen Screening-Typ.

These plantings will be used to screen the adjacent homes from the park pathways.

12

Park Commons

The commons will be an open turf area for informal activities. This area will be smoothly sloped and graded to allow for a variety of active and passive uses.

13

Storm Outfall

An overflow catch basin will be provided at the end of the raingarden to eliminate flooding during heavy rain events.



Mariner Professional Services



van der Zalm + associates

